

# HT - 2000 Series

**POSIFLEX**

## User's Manual

Rev. A0



### **FCC Notes:**

This equipment generates, uses, and can radiate radio frequency energy and, if not installed and used in accordance with the instructions manual, may cause interference to radio communications. It has been tested and found to comply with limits for a Class A digital device pursuant to subpart J of Part 15 of FCC Rules, which are designed to provide reasonable protection against interference when operated in a commercial environment. Operation of this equipment in a residential area is likely to cause interference in which case the user at his own expense will be required to take whatever measures to correct the interference.

### **Warranty Limits:**

Warranty terminates automatically when any person other than the authorized technicians opens the machine. The user should consult his/her dealer for the problem happened. Warranty voids if the user does not follow the instructions in application of this merchandise. The manufacturer is by no means responsible for any damage or hazard caused by improper application.

### **About This Manual:**

Posiflex has made every effort for the accuracy of the content in this manual. However, Posiflex will assume no liability for any technical inaccuracies or editorial or other errors or omissions contained herein, nor for direct, indirect, incidental, consequential or otherwise damages, including without limitation loss of data or profits, resulting from the furnishing, performance, or use of this material.

This information is provided "as is" and Posiflex Inc. expressly disclaims any warranties, expressed, implied or statutory, including without limitation implied warranties of merchantability or fitness for particular purpose, good title and against infringement.

The information in this manual contains only essential hardware concerns for general user and is subject to change without notice. Posiflex reserves the right to alter product designs, layouts or drivers without notification. The system integrator shall provide applicative notices and arrangement for special options utilizing this product. The user may find the most up to date information of the hardware from web sites: <http://www.posiflex.com> or <http://www.posiflex.com.tw>

All data should be backed-up prior to the installation of any drive unit or storage peripheral. Posiflex will not be responsible for any loss of data resulting from the use, disuse or misuse of this or any other Posiflex product.

All rights are strictly reserved. No part of this documentation may be reproduced, stored in a retrieval system, or transmitted in any form or by any means, electronic, mechanical, photocopying, or otherwise, without prior express written consent from Posiflex Inc. the publisher of this documentation.

© Copyright Posiflex Inc. 2005

All brand and product names and trademarks are the property of their respective holders.

## **ALERT TO OUR HONORABLE CUSTOMERS:**

- Please always read thoroughly all the instructions and documents delivered with the product before you do anything about it. Don't take any premature action before you have a full understanding of the consequences.
- This product contains inside a Lithium battery and maybe also a sealed type Lead acid battery if the UPS battery option is ordered. Please always follow local environmental protection laws / regulations for disposal of used batteries and always replace only with battery of same type.
- If you have an UPS battery installed in the product:
  - ✧ Temperature above **40°C must be strictly avoided** as it could cause termination of battery life and unexpected result even if the battery is not in work.
  - ✧ **Do not** power off the system just by shutting off the AC power leaving the battery supporting the whole system till completely exhausted. **Repeatedly using it up or improper maintenance reduces the battery life dramatically.**
  - ✧ Always fully recharge the battery at least once every 3 months if the battery is not connected.
  - ✧ Always **disconnect the UPS battery** from the system if the system is to be left OFF for more than **72 hours** to prevent possible damage. Only connect the UPS battery back right before you are going to re-power on the system.
  - ✧ Replace the battery as soon as the monitoring software indicates the battery is out of service. Attempt to recharge a dead battery is **dangerous!**
  - ✧ A separate battery monitor is not required for this series.

## **DAILY MAINTENANCE GUIDE**

For regular cleaning of the HT systems, please use only soft haired brush or dry soft cloth. You may use moist soft cloth to remove stains when necessary. Apply only proper amount of mild neutral detergent for obstinate stains. Please note that never use Acryl dissolving solvent or Polycarbonate dissolving solvent. You may apply ammonia-based glass cleaner only on the screen surface.

## **BRIEF INTRODUCTION**

### **THE USER'S MANUAL**

The purpose of this manual is to guide the user in the initial installation and general use of the Posiflex HT-2000 series of POS terminals. It does not explain any application software that may be supplied with it.

We intend to provide our customers with all technology advantages available by evolving the product design to incorporate appropriate changes and improvements. So some detail differences may exist between this manual and the equipment supplied.

For more detailed or technical information please refer to the CD-ROM disc associated or consult our authorized dealers or visit our web site: <http://www.posiflex.com.tw/> or <http://www.posiflex.com/>

### **THE PRODUCT**

The Posiflex range of HT-2000 terminals have been designed and manufactured to meet the high-end demand on POS systems. It incorporates all the advances of PC technology within a rugged housing designed for use in a hostile retail environment. By providing an integrated design, it has retained many of the secure features of a traditional ECR and has avoided the wiring “spaghetti” associated with more traditional PC solutions. This Open Standard Architecture ensures that this terminal can use the PC application software and development tools that are now inexpensively available and abundant.

The terminal is powered by most up to date CPU and provides a color TFT LCD screen with a resistive type touch control panel on sturdy and easily adjustable structure on top of the main unit. It may be used as a self-content unit or as one of several terminals in a network system controlled by a “back office” computer through the integrated network interface. The HT-2000 system is delivered with a CR port with status sensibility for controlling 1 or 2 Posiflex printer drive type cash drawers, 6 modern USB ports and the most advanced UPS functions to safeguard the POS operation against intermittent power failure with an option UPS battery, careless touch on the power switch, and to support unmanned remote account consolidation operation, etc.. Versatile options besides the basic model selection can apply to it too.

An optional integrated unit of MSR and/or Finger print sensor can be installed in the HT-2000 system. The HT-2000 system also provides an optional CF memory card slot.

### **THE BASIC MODELS**

- HT-2212H – 12.1” touch monitor w/ HDD
- HT-2212 – 12.1” LCD monitor w/ HDD
- HT-2012H – 12.1” touch monitor w/ CF memory card reader
- HT-2012 – 12.1” LCD monitor w/ CF memory card reader

## THE STANDARD FEATURES

**CPU:** AMD NX1100; **HDD:** 20 GB or above; **RAM:** 128 MB upgradeable to 2 GB max.

**Ethernet Networking:** The standard network port works with both 10 Base T and 100 Base T.

**Serial Ports:** There are 2 serial ports in a HT-2000 system. COM1 is shared by the direct driven cash drawer port and the UPS function. Each COM port is capable of providing independently a +5 V DC or a +12 V DC supply. All these DC supplies are achieved through internal jumper setting and they are all defaulted to give **no** DC supply at delivery.

**Parallel Port:** Each HT system is equipped with a parallel port that supports SPP/EPP/ECP.

**VGA Port:** There is a VGA connector for connection of external monitor without + 12 V DC power supply.

**USB Ports:** The HT-2000 series is equipped with 6 USB type A connectors for connection of USB (Universal Serial Bus) devices. One of the 6 ports is extended to one top edge of case for easy connection to the integrated upgrade kit BC-300 or SD-300.

**CR Port:** Capable of controlling 2 cash drawers.

**Modem Ring-Up, LAN Or Alarm Wake-Up:** The HT-2000 series can be turned on automatically upon an incoming COM port Modem call or LAN status or data packet received on LAN or a preset time/day/week/month.

**Built-in UPS function** to support the system from intermittent power failure (battery itself is an option)

**Accidental power off protection** – The power switch is safely located at one side, and this power switch can be defined as a “ON” switch only through software command.

## THE OPTIONAL ITEMS

**Note:** Underlined items below must be installed prior to delivery from factory. Attempt to apply them by end users is either too difficult or is likely to cause damages. Italic items below are stand alone peripheral devices.

- a) **DRAM Memory Expansion:** Upgrade up to 2GB max.
- b) **2<sup>nd</sup> HDD:** 2.5” IDE interface
- c) **Compact Flash Memory Card Slot:** Type I
- d) **Side Mount Integrated Upgrade Kit: (BC-300)** Bar code card reader or **(SD-300):** This item contains options of a **Magnetic Stripe Reader** with choice among 2 tracks or 3 tracks in ISO standard or JIS I/II (JIS MSR for factory upgrade only) and an optical type **Finger Print Sensor**
- e) **Customer display:** Pole mount 2 x 20 VFD display or LCD pole display or **2<sup>nd</sup> LCD Screen**

- f) **Audio amplifier and internal speakers**
- g) **Wireless LAN Adaptor:** inside back cable cover, IEEE 802.11b/g
- h) **UPS Battery:** 2.3 AH 12V lead acid maintenance free battery
- i) **2-in-1 Cash Drawer Control Cable:** Cable CCBLA-238, when added to the CR port of the HT-2000 series, can be used to control two Posiflex printer drive type cash drawers.
- j) **Preload OS:** Win 2000, Win XP pro or WEPOS.
- k) **Cash drawer:** Printer (Direct) drive type Posiflex cash drawers. Model numbers coded as CR-3100, CR-3200, CR-4000 or CR-4210
- l) **Programmable Keyboard:** Various types of Posiflex programmable keyboards. Most recommended: KB-6000, KB-6200 series or KB-6600.
- m) **Bar Code Scanner:** Short range type (near contact) and long range type (250 mm for CD-3830) CCD scanners.
- n) **POS printer:** Posiflex 9 pin dot matrix impact printer or Posiflex thermal printer of RS232 serial interface, parallel interface, USB interface or even wireless interface.

### **SYSTEM BOX CONTENTS**

When you receive the system box you will find it contains several items:

- HT-2000 system unit with the 12.1" LCD panel integrated on top
- This user's manual
- Recovery CD for preloaded OS or Posiflex Product Information CD for driver utilities without OS
- Optional components installed to system unit as ordered
- Power adaptor with power cord (1 set)

# INSTALLATION GUIDES

## IMPORTANT

Please do not connect the power cord or turn on the main unit until you have fully read the installation guides and followed the instructions!!!

## TECHNICAL ENHANCEMENTS

Applicable technical enhancements in HT-2000 series include serial COM port power supply settings, RTC battery replacement, VGA port power supply setting, DRAM upgrades and adding a half-length PCI adapter card. All these technical enhancement operations require purchase of applicable Technical Manual from Posiflex or consultation from Posiflex authorized dealers and should be handled only by a **qualified technician**.

## NON-USER-INSTALLABLE OPTIONS

When the HT system is ordered with options like expanded system memory, 2<sup>nd</sup> HDD or CF memory card reader slot, the option(s) is (are) already installed in the system delivered. Therefore, no more installation is required.

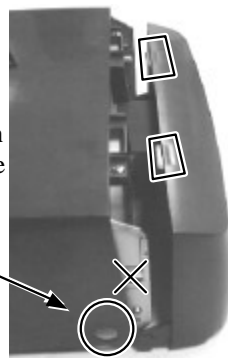
## HALF LENGTH PCI EXTENSION CARD

The whole installation operation of a half-length PCI extension card involves cautiously accessing the interior of the system, replacing the slot window metal plate, applying the card and installing its driver. Therefore, only a **computer expert** can perform this operation **on his own risk**.

## MAIN CONNECTION AREA

The HT series is constructed for very easy maintenance. Press inward both plastic buttons at lower rear corners on both sides of the system unit (circled in right picture) to release the lower part of back cable cover. Please note that there are 2 plastic hooks on top cover holding the back cable cover as marked on upper part of the picture. Carefully release the back cable cover from the hooks to show the main connection area.

Push This Button and also The One on The Other Side to Open Cable Cover

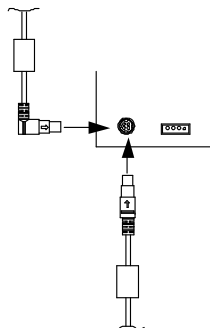


**Note: Never** press the 2 springs on the metal walls as cross marked in the picture. Carelessly pressing on these 2 springs **could cause damages**. The **user** shall be **responsible** for **such kind of damage**. Even the maintenance technician must always put a piece of clean flat foam of sufficient size in front

of the system unit before pressing these 2 springs. The LCD and touch panel may flip forward by gravity and get or cause damage by hitting anything in front of the system unit.

### POWER ADAPTOR

The power connector resides in the lower left corner of main connector area. Please make sure that the cable from the power adaptor is inserted into the power connector of HT system in the correct orientation as illustrated in right drawing. The manufacturer is not responsible for any damage caused by improper orientation of this connection. Please check that for straight type power plug the arrow mark on the plug is at top side of the plug. For right angled power plug, if the arrow mark is on its end, it should be pointing up. If the arrow mark is on one side of the right angled power plug, it should be on the right as in the drawing. Please also check that the city power supply specification from the wall socket is within the operation range of the power adaptor.

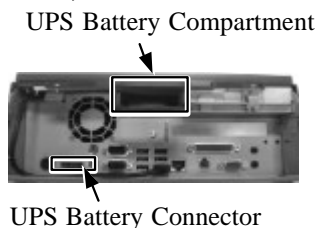


### WIRELESS LAN (OPTION)

When the wireless LAN option is ordered with the HT system, this option is already installed in the delivery inside the back cable cover with its cable connected to one of the USB port. This cable **must be disconnected first** if installed whenever the back cable cover is opened for any operation.

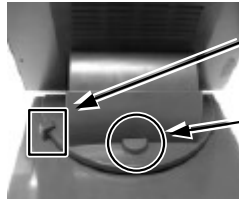
### UPS BATTERY (OPTION)

When the HT system is installed with the UPS battery, the UPS battery is in the carton at delivery. Please take it out and place it in the battery compartment at center upper part of the connection area indicated as upper rectangle in picture at right. Connect the cable to its connector in the main connection area beside the power connector **only when the system is about to power up for operation. Always disconnect the UPS battery** when the system is to be left powered off for more than few days. Please pay particular attention to the environment requirement for UPS battery in next chapter “USING THE HT SYSTEM”.



## LCD CASHIER DISPLAY

Push down the round plastic button at rear of the display base as circled in right picture to adjust the display up and down. Release the button when done will lock the panel firmly for application. Pushing the rectangular shape plastic button to its right toward the base center allows user to adjust the display horizontally for best view angle.



Push inward to turn left-right

Push down to turn up-down

## CUSTOMER DISPLAY (OPTION)

When the HT series is ordered with the customer display PD-2601 or PD-7321 option, the customer display together with the pole for installing them to corner of back cable cover will be delivered in separate package from the system unit. Please **follow the Installation Guide in package of the option**. The customer display will occupy one USB or COM port in the connection area.

## SIDE MOUNT UPGRADE KIT (SD-300/BC-300 OPTION)

When a side-mount upgrade kit option SD-300 or BC-300 is ordered with the HT system, this option is already installed in the delivery. No matter the kit itself contains MSR only, finger print sensor only or both options, the connection to the HT system is one USB cable inserted to the extended USB port at top right edge of the system unit as circled in the upper picture at right.



After removing the plastic cover by pushing it side way, the extended USB port can be found as marked in the lower picture at right.

The USB cable from the optional side mount upgrade kit SD-300 or BC-300 should be inserted in the cable hook on back of LCD panel as circled in left picture.



## AUDIO PORT

The audio output port must be connected to either the earphone or a pair of speakers with booster or amplifier if used. For the HT systems installed with the audio amplifier option, the speaker will be installed internally.

## PROGRAMMABLE KEYBOARD (OPTION)

All types of Posiflex programmable keyboards can be applied in HT system. Most recommended models are: KB-6000, KB-6200 series and KB-6600. Just connect it to the PS/2 KB port in the main connection area. The



application of the keyboard requires no software driver and is free from any software compatibility issue. The system integrator can program the content of the keyboard for the application software following the technical guidance of Posiflex keyboard programming utilities.

### **BARCODE SCANNER (OPTION)**

Modern barcode scanners applied in POS business are of KB interface type. Most of them provide both a male and a female PS/2 KB connector. Therefore it can be connected either to the bottom of the Posiflex programmable keyboard with the cable fit into the strain relief groove or in between the PS/2 KB port of the system unit and the Posiflex programmable keyboard. The only consideration is that in programming stage of the programmable keyboard, nothing (including the barcode scanner) should come in between the system and the programmable keyboard. However, this should be no problem in application phase.

When a KB interface barcode scanner is installed in HT-2012 or HT-2212 (no touch panel), a connection of a normal PS/2 keyboard or the Posiflex programmable keyboard could become obligatory by some OS. Therefore, if there will be no keyboard installed for such OS, it is advisory to use an USB interface type barcode scanner instead of the PS/2 KB interface type.

### **PRINTER (OPTION)**

There are many models of Posiflex POS printers that can be applied in HT system. These printers cover several interface technologies. Please connect the printer to a COM port, the LPT port or an USB port in the main connection area depending on the printer model and then connect its power adaptor. It is also possible to control a Posiflex wireless POS printer by connecting a separately purchased wireless Dongle to one of the COM ports in HT system.

### **CASH DRAWER (OPTION)**

The RJ11 connector in main connection area of a HT system can be used for controlling most of the common cash drawers available on the market. However, it is recommended that the Posiflex CR-3100 or CR-3200 or CR-4000 or CR-4100 or CR-4210 be used for best compliance.

The HT system will directly control the cash drawer using the cash drawer port (CR) both to operate the opening mechanism and to monitor the drawer open status. Both functions may be accomplished under software control of the COM1 serial port.

Use the cable supplied with the CR-3X00/4X00 cash drawer (Part No. CCBLA-180) for connection to the CR port in HT system. This cable has a 6-pole plug at one end and an 8-pole plug at the other. The 8-pole plug should be inserted into the connector marked: "signal cable from POS Printer" at the rear of the cash drawer. The 6-pole plug should be inserted in the connector marked

“CR” found in the main connection area in the system.

The user may also use the optional 2-in-1 cash drawer control cable CCBLA-238 to control 2 cash drawers in 1 port. It has a 6-pole plug at one end and two 8-pole plugs at the other. The 6-pole plug should be inserted in the connector marked “CR” found in the main connection area in the system. Each 8-pole plug should be inserted into the connector marked “signal cable from POS Printer” at the rear of one of the cash drawers. The cable lengths for the two 8-pole plugs are different. Use the shorter one for the original cash drawer “CR1” and use the longer one for the extended cash drawer “CR2” that will be distinguished by the software command.

## **OPERATING SYSTEM RECOVERY**

The operating system exists in the HDD in top of the system unit. Once the software system on HDD collapses, it is possible to restore the operating system onto a physically intact HDD with use of the Recovery CD that comes with the preloaded operating system. Please follow the instruction from your system integrator for system / software restoration. Follow the instructions below for operating system recovery only if your system integrator does not advise otherwise.

For the HT system preloaded with Windows system on HDD, Posiflex provides recovery CD delivered with the hybrid terminal for the preloaded operating system. The System Integrator shall take care of software restoration after OS recovered. Use a Posiflex supplied USB interface external CDROM drive for such action. Other brand CDROM drive may require its specific driver different from what supported in the recovery CD.

**Please use the recovery CD in rescue operation only. Using it otherwise may wipe out whatever stored in the HDD!** All upgrade devices drivers needed for manual installation in usual way are available in the subfolder “\drivers” in OS recovered HDD and the latest versions of these required drivers will be available on our web: <http://www.posiflex.com> or <http://www.posiflex.com.tw>.

Now please follow instructions from your system integrator for software recovery after OS recovery and driver installation.

## **OPERATING SYSTEM INSTALLATION**

This product is highly professionalized equipment. The installation of an OS into a machine without any preloaded OS could constitute major difficulty for average user who either has barely limited technical knowledge of this professionalized equipment or is insufficiently equipped with necessary facilities to accomplish such a task. Therefore, installation of an OS into a system without preloaded OS is highly discouraged. Posiflex shall not be responsible for any technical support to questions arisen due to non-preloaded OS.

## USING THE HT SYSTEM

### BEFORE POWER ON – A Check List

It is *very* important that you check the following operational points:

#### Ventilation

This terminal must *NOT* be operated in an environment with restricted ventilation. There must be at least 25 mm air clearance around any top or side ventilation holes with a free flow of air around the unit at *ALL* times for the installation.

#### Operating Environment

The equipment must not site in direct sunshine, near a heater or in a damp and must be free from contaminants like dust, smoke or fume.

The equipment must not be operated or stored in extremes of both temperature and humidity/moisture.

(Operating range 0°C to + 35°C and up to 80% relative humidity – non condensing max. wet bulb 26°C)

#### Power Supply

The operating voltage of the power supply should be checked to confirm that it is set within the range of the local power supply. The power cable, the power outlet and any power fusing arrangements must conform to local safety regulations.

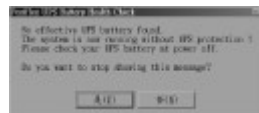
#### UPS Battery (option)

##### General care:

The UPS battery is consumable beyond product warranty. Please definitely observe the alerts in beginning of this manual. If the equipment is to be powered off for more than few days, please always **disconnect** the battery from the system. Reconnect it and turn on the system to recharge the battery for 1 ~ 2 hours every 3 months for temperature lower than 30°C. Recharge for 1 ~ 2 hours every month for temperature over 30°C. Temperature above **40°C must be strictly avoided** as it could cause termination of battery life and unexpected result even if the battery is not in work. The UPS battery can support basically the data preservation and smooth running of the system during intermittent or few minutes (2 ~ 6 min. depending on loading and battery condition) power failure.

##### Battery replacement:

In the preloaded OS for a HT-2000 series, there is a built in utility Posiflex Power Switch Manager that will indicate the UPS battery status of the battery. When an installed UPS battery is found to be disabled or when pop up warning message like this picture appears, please



replace the used up UPS battery at power off as soon as possible.

**Emergency treatment:**

The battery is constructed maintenance free and leakproof. Its storage space in HT system also provides very good protection as long as the ambient temperature remains below 30°C and the ventilation of the HT system remains free. However, should any accident happen and the sulfuric acid from the battery spills on skin or clothing, wash immediately with water. If the acid comes in contact with eyes, rinse eyes with large amount of clean water and see a doctor immediately. A larger external battery may be connected to give an extended operation. Please check your dealer about this capability when required.

**WARNING:**

**If there are any signs of over charging or leakage of electrolyte please contact your dealer immediately**

**VGA Display Port**

The VGA port in the HT terminal can be connected to an external (secondary) monitor with independent power arrangement.

The video memory of this port shares from the system memory. The video memory size can be set in the BIOS CMOS setting to match the user's application.

**Serial Port – COM1**

For the HT system installed with the UPS function module, a COM1 terminator will also be supplied. Please always occupy COM1 serial port by a suitable serial device or this terminator. If this port is left vacant or connected with something like a mouse, the power switch management and the cash drawer control may fail to work correctly. An RS232 MODEM is not applicable to this port. It is recommended to use COM2.

**LED INDICATORS**

On bottom rim center of HT system cashier LCD panel, there are 2 LED indicators. The LED at right indicates the LAN status. When it lights up in green, the onboard LAN chip is linked. When it flashes in yellow with steady green light, data transmission in LAN is in process. The LED at left indicates Power/StandBy status. When it lights up in orange, it means that the external AC power is standing by with the system powered off. It turns into blue when the system is powered up. When the UPS battery is installed, this LED further indicates the status of system working on battery power by flashing in blue. The blue light will flash rather fast when the UPS battery approaches a fully discharged condition to remind the operator that power will soon finish. In few seconds, the whole system will soon be automatically turned off and the LED will be OFF. In case the AC power resumes during the

usage of the battery power, the flashing LED will keep on flashing for few seconds before steady till the AC supply is stable.

## **POWER ON/OFF CONTROL**

The HT terminal implements electronic power control, such that the main power to the system may be controlled by many methods as below:

1. Hardware power switch
2. Software OFF command
3. Automatic power ON control
4. Emergency power OFF

Switching from OFF to ON requires a normal supply of the AC power.

### **Hardware Power Switch**

This button is located at bottom front corner of right side as in right picture and can be used to turn the system on and off alternatively. This hardware switch can also be programmed to be an ON only switch through software command so that when this switch is accidentally pressed during system turned on, the system just remains on and unaffected.



### **Software Off Command**

The system may also be shut down under software control. Please just follow the arrangement by your system integrator for this capability.

### **Automatic Power On Control**

The system may also turn on according to some preset conditions such as Modem Ring Up and Alarm Clock Wake Up or LAN Wake Up.

To utilize Modem Ring Up or Alarm Clock Wake Up function, the user should enter the CMOS setup by pressing “Del” key at system boot up, choose for “PM Wake Up Events” in “Power Management Setup” and make the “Ring Power Up Control” enabled for Modem Ring Up or select the “Power Up by Alarm” for Alarm Clock Wake Up. Save the configuration and exit the CMOS setup program. The Preset Power On Control will then be ready after a normal power off. For LAN wakeup, an operating caller system connected through LAN to the system is required. It also requires a qualified networking technician to check the LAN chip ID of the HT system for the caller system to wake it up.

When the HT system is turned off after a successful boot up, the preset automatic power on functions will keep monitoring for the preset conditions and turn on the system when the preset conditions are met.

Please note that if the HT system is improperly turned off before a complete boot up procedure, the above preset power on control functions will be disabled until next turning off after a complete boot up.

## Emergency Power Off

In case of serious system halt due to any reason, the system could fail to be powered off through normal means. Press and hold the Power ON/OFF Switch for Emergency Power Off. Release the switch after the system powered off. It will take about 10 seconds. If there appears to give a special coded beep tone in the pattern “short, long, short, long, short” prior to the system power off in this process, please remove the AC power and wait for few minutes to allow the hardware registers to reset (If there is no such beep, AC removal is not required). Then you may restart the system and take remedial action against the precious failure.

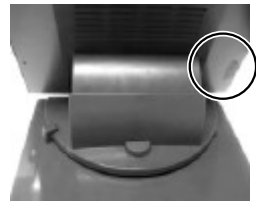
## MAIN LCD TOUCH MONITOR

### Mechanical Adjustments

The 12.1” LCD color display is integrated on display platform to give the operator the clearest view. The display may be adjusted to have the inclined angle from 42.5° to 77.5° and rotated from straight forward to 16° to the left.

### Display Controls

On lower left edge of back of the LCD panel there is a plastic wheel knob as circled in the picture at right. Turning this knob up or down changes the brightness of screen display accordingly.



### Display Utility Driver

The end user of the HT terminals is not supposed to install the utility drivers personally. If an optional preloaded OS is ordered, the required driver will be already installed in the preloaded OS. However, the driver will always be available over our web site: <http://www.posiflex.com>

### Touch Function

#### Mouse emulation

The touch panel in HT system works exactly like a standard PS/2 mouse within the (primary) screen display area when its driver is properly installed. However, if the system is running under safe mode due to a previous improper shutdown or for any other reason, most drivers are disabled in this mode and the touch panel calibration may not coincide with the mouse pointer or even completely out of work. It is recommended to **use an USB mouse or USB keyboard in safe mode.**

All the below mentioned mouse emulation functions in the primary display area can be manipulated through relevant software. The system can give a beep when the touch panel is touched and can respond as if the left button of a mouse is clicked at the point touched. If the point touched is dragged across the screen surface, it can respond as if it is using the mouse

drag and drop feature. If the point is touched, released and touched within a short time interval, it will simulate double-clicking left button of the mouse. Emulating the click on right button of a real mouse is further illustrated in paragraph below.

### **Touch terminal manager**

Before using the PS/2 interface resistive type touch control panel, one must be aware that if you connect any monitor to the VGA port of HT system for extended secondary display application, **you can not apply any touch control function for this secondary display** due to driver conflict concerns! The operation range of a PS/2 mouse is also limited within the primary display area.

A program named “Posiflex Touch Terminal Manager” is installed in the preloaded Windows system for the user to maneuver versatile features of the touch terminal with a PS/2 interface touch panel controller. This program can also be obtained by download from the POSIFLEX web site. However, the installation process of this driver for Win XP and Win 2003 Server requires some careful attention to the notice messages.

With proper setup and selection on control items in “Posiflex Touch Terminal Manager”, a drawing representing a 2-button mouse will appear on the desktop. Touch the right button in this drawing. Any touch on the screen after this action will result in a right button mouse click at the point touched. After touching the left button in this drawing the screen touch will resume the left button function. This program also controls the beep generated when the touch panel is touched, the detail in right button click emulation, and also provides touch panel re-calibration. In principal, the touch panel requires no further calibration once properly set.

## **CUSTOMER DISPLAY**

The optional customer display PD-2601 or PD-7321 mounted on a pole at rear corner of HT system can be turned horizontally for best viewing effect in application.

## **SIDE MOUNT UPGRADE KIT SD-300**

In SD-300 mounted at right side of the touch monitor of HT system, there may be the MSR for reading a magnetic stripe card and/or the optical type finger print sensor. For magnetic stripe card reading, be sure to insert the card to the bottom with magnetic stripe facing the mark aside the slot. The movement of the card can be either inserting the card from the top surface then sliding the card down out of the slot, or sliding the card upward from the lower side of the slot till it reaches the top end as long as the card is a standard one. A non-standard card recorded without complete degaussing prior to recovery may accept only one direction in card reading.

## FAN CONTROL

In the preloaded OS for this HT system, there is an embedded function that can keep on monitoring the interior temperature and the fan revolution rate and regulating each required fan power to gain maximum ventilation effect with lowest possible noise. This function is disabled by default at delivery. The user can decide to engage this function by clicking “Start” --> “Programs” --> “Posiflex Tools” --> “Posiflex Fan Control” to pop up a window like the right picture. Click “Enable” then “Apply” to engage this function in background. This function will remain operating even after system restart. To disable this function, you have to pop up this window again and click “Disable” then “Apply” and restart the system. If system hang due to CPU overheat occurs, please **review the ventilation** condition and environment temperature, check if the fan is stuck by contaminants such as dry grease or threads and try to correct the situation when the system is off and cooled down. You may power up the system again after the system cooled down and trouble cause removed. However, if the trouble remains, please consult your dealer for possibly fan replacement on worn out.



## USB

There are in total six standard USB female connectors in the rear room. All support the Universal Serial Bus Specification standard 2.0 and also 1.1. If for any reason (though very unlikely in ordinary practice) these ports has to be limited as USB 1.1 only, please enter BIOS setup and go to “Integrated Peripherals” then “SiS OnChip PCI Device” and disable the item “USB 2.0 Supports”.

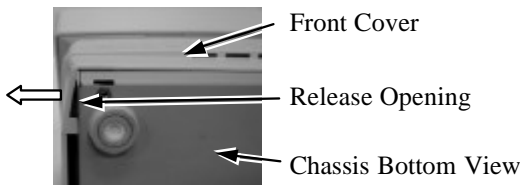
One among the six USB ports can be extended to top edge of system unit for the side-mount upgrade kit by a cable.

## VENTILATION MAINTENANCE

To keep this equipment in orderly service, following maintenance should be performed on a regular basis.

### Removing Front Cover

Please first remove any power and signal connection to this equipment. Please then check at the bottom side of the chassis that there is a





gap between the bottom side of front cover and the chassis at the left corner of front cover. Pull the front cover out from this opening to release the left side hook of front cover from the chassis as indicated by the hollow arrow in the picture above.



Please then pull the bottom side of front cover forward to release the bottom hooks of front cover from the chassis as indicated by hollow arrow in left picture.

Now pull the left side of front cover down a little to free it from the main cover as in the right picture.



Power Switch



It may be required to push the power switch down to completely remove the front cover.

### **Cleaning for Front Ventilation**

Use vacuum cleaner to remove any dust or threads accumulation away from both the ventilation holes on front cover and ventilation grids on chassis exposed after removal of the front cover.

Front Ventilation Grids on Chassis

Ventilation Holes on Front Cover



### **Replacing Front Cover**

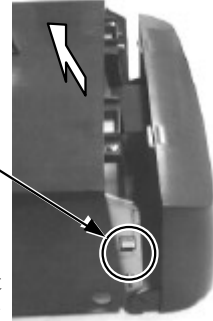
Follow the opposite procedure as removing the front cover to replace the front cover in position. Please make sure the all hooks on front cover is well positioned into chassis. Please remember to check that the power switch is at “Off” position before power and signal connection.

### Accessing Side Ventilation Grids

The operation to further clean the side ventilation grids requires much more highly technical maneuver. Therefore careful attentions must be taken throughout the further cleaning operations below. When the main unit is opened, there must be no liquid spill, no electro-conductive material, no electric charged device come into the area of the main unit. Please also note that not to touch any component or cable inside.

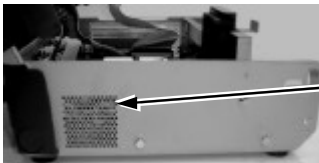
Please first disconnect every cable from the main unit and turn the LCD panel to straight up position. Prepare enough space in front of the HT system and lay a piece of clean soft clothe of appropriate size there to prevent damage. With the back cable cover opened, push in the circled spring button in the right picture on both sides of chassis and raise the rear edge of the top cover. Apply some mild maneuver if there is already a pole display mounted.

Push The Spring Buttons on Both Sides and Raise The Rear Part of Top Cover

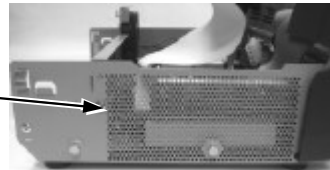


### Cleaning for Side Ventilation

Use vacuum cleaner to remove any dust or threads accumulation away from outsides of both ventilation grids on chassis exposed after removal of the front cover as in pictures below and close back the top cover when done.



Side Ventilation Grids on Chassis





**POSIFLEX** 

**警告使用者**

T31454

這是甲類的資訊產品，在居住的環境中使用時，可能會造成射頻干擾，在這種情況下，使用者會被要求採取某些適當的對策。

Part 20